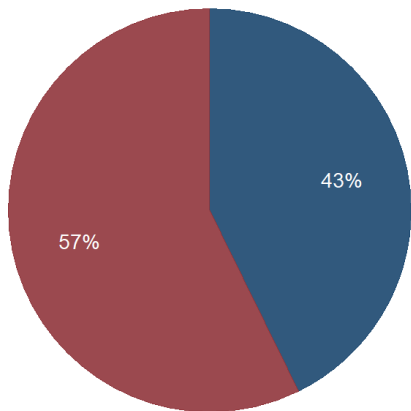


Kentucky Quarterly Coal Report

July to September 2018

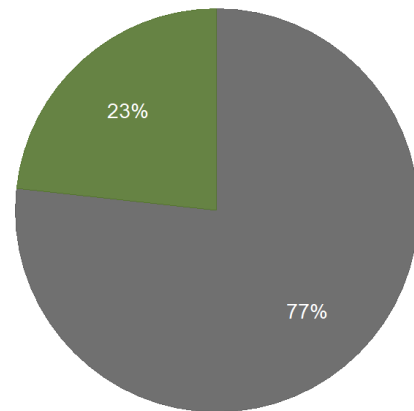
Kentucky Coal Production by Region, Q3-2018



Legend: Eastern Kentucky (Blue), Western Kentucky (Red)

Kentucky Energy Database, EEC-DEDI & US-DOL-MSHA-MDRS Queried on: 2 Nov 2018

Kentucky Coal Production by Mine Type, Q3-2018



Legend: Underground (Grey), Surface (Green)

Kentucky Energy Database, EEC-DEDI & US-DOL-MSHA-MDRS Queried on: 2 Nov 2018

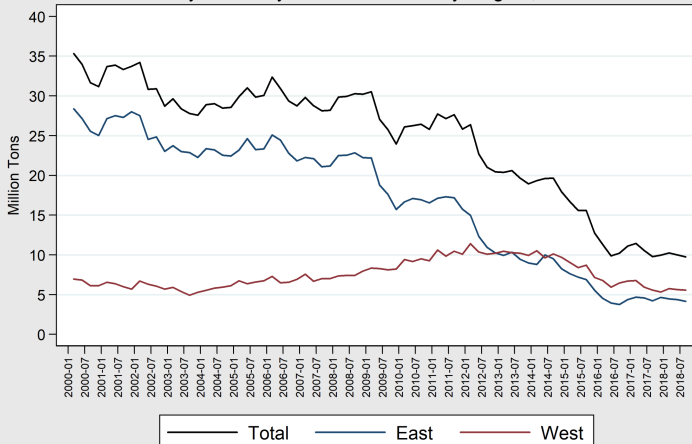
Region	Q3 Tonnage	YOY Change	Quarter Change
Total	9,740,970	-0.5%	-2.5%
West KY	5,579,392	-0.1%	-0.8%
East KY	4,161,578	-1.1%	-4.7%

Third quarter production declined by 2.5 percent from the second quarter; year-over-year production decreased by 0.5 percent.

Mine Type	Q3 Tonnage	YOY Change	Quarter Change
Total	9,740,970	-0.5%	-2.5%
Underground	7,473,563	+4.2%	-2.4%
Surface	2,267,407	-13.4%	-2.8%

Coal production at underground mines totaled 7.4 million tons during the third quarter of 2018, an increase of 4.2 percent from the previous year.

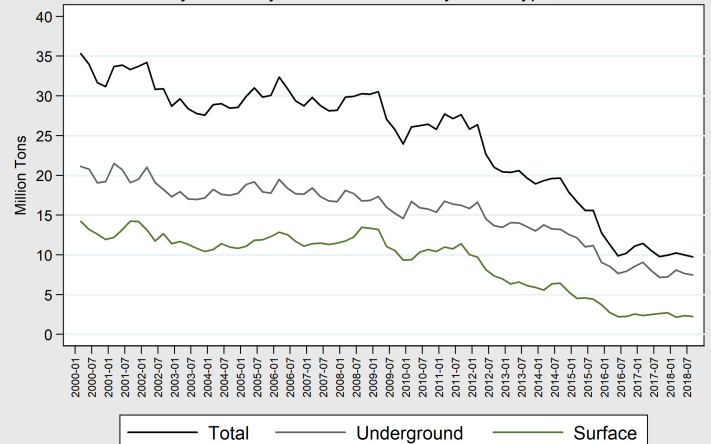
Kentucky Quarterly Coal Production by Region, 2000-2018



Kentucky Energy Database, EEC-DEDI & US-DOL-MSHA-MDRS Queried on: 2 Nov 2018

Eastern Kentucky decreased output by 1.1 percent from the third quarter of 2017 to 4.1 million tons. Western Kentucky decreased output by 0.1 percent to just under 5.6 million tons. Western Kentucky mines accounted for 57 percent of Kentucky coal production while eastern Kentucky accounted for 43 percent.

Kentucky Quarterly Coal Production by Mine Type, 2000-2018

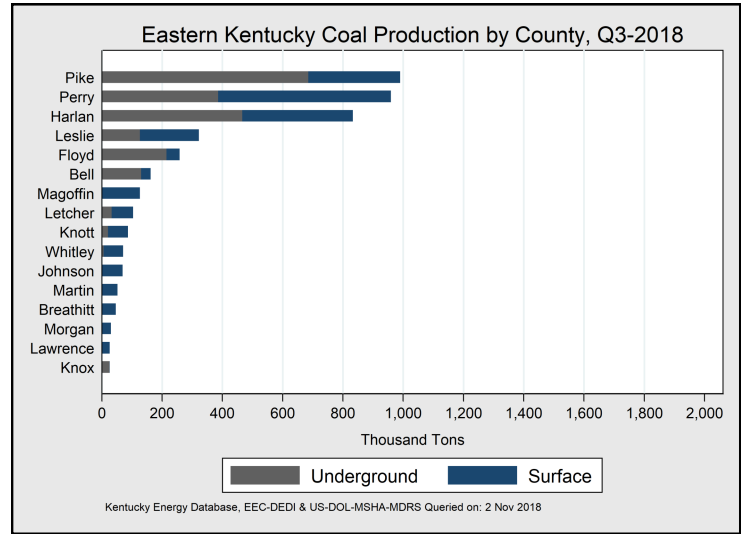
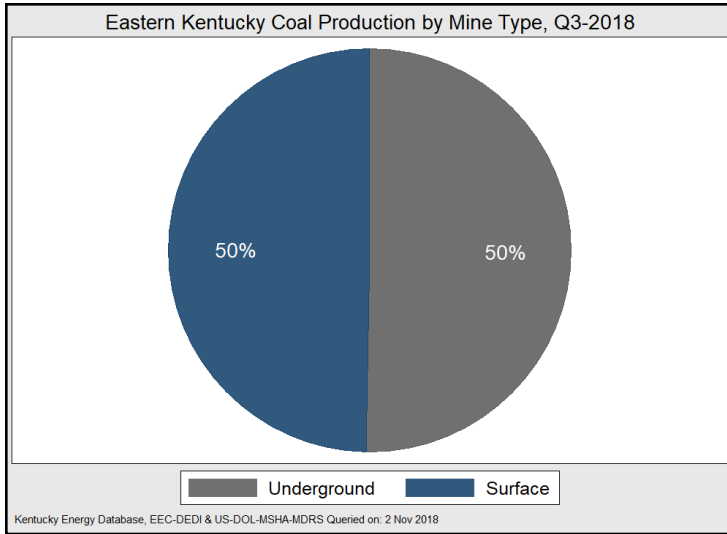


Kentucky Energy Database, EEC-DEDI & US-DOL-MSHA-MDRS Queried on: 2 Nov 2018

In the third quarter of 2018, surface mines in Kentucky produced over 2.2 million tons of coal, a 13.4 percent decrease from the third quarter of 2017. Underground mines accounted for 77 percent of coal production in the Commonwealth, while surface mines contributed 23 percent.

Eastern Kentucky Coal Production

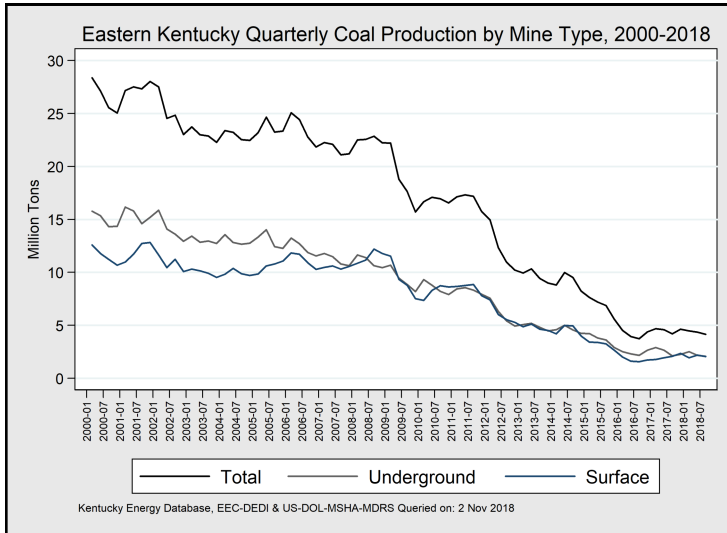
July to September 2018



Mine Type	Q3 Tonnage	YOY Change	Quarter Change
Total	4,161,578	-1.1%	-4.7%
Underground	2,091,711	-1.9%	-3.4%
Surface	2,069,867	-0.4%	-6.0%

Eastern County	Q3 Tons	YOY Change	Quarter Change
Pike	990,076	-12.3%	-4.7%
Perry	959,002	-0.4%	-9.1%
Harlan	832,963	+24.4%	-1.5%
Leslie	321,944	+59.3%	-18.3%
Floyd	258,550	-10.9%	+21.3%
Bell	161,944	-44.1%	-20.7%
Magoffin	126,328	-	+2.9%
Letcher	103,438	+124.2%	+9.4%
Knott	87,060	-24.2%	-17.5%
Whitley	70,455	+0.7%	-4.7%
Johnson	69,308	-60.8%	-29.1%
Martin	51,727	-63.4%	-
Breathitt	46,311	+7.8%	-10.0%
Morgan	30,575	+42.4%	+13.6%
Lawrence	26,316	-5.6%	+41.9%
Knox	25,581	+22.3%	-1.4

Underground production in eastern Kentucky decreased by 4.7 percent from the second quarter of 2018.

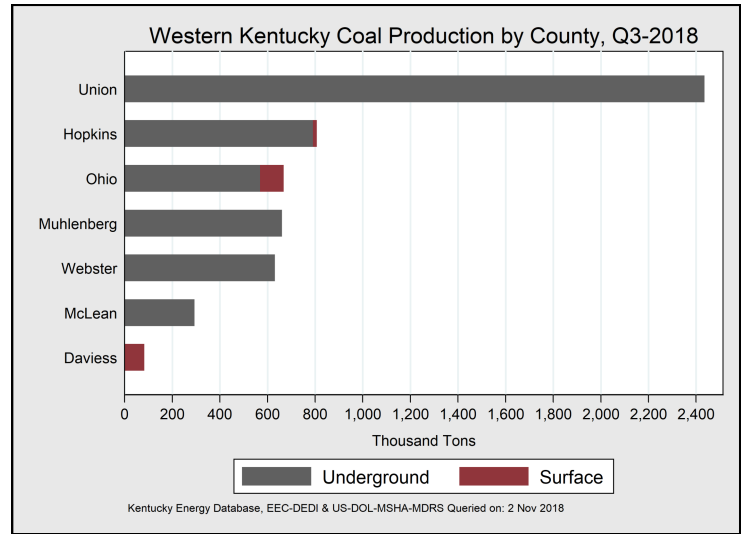
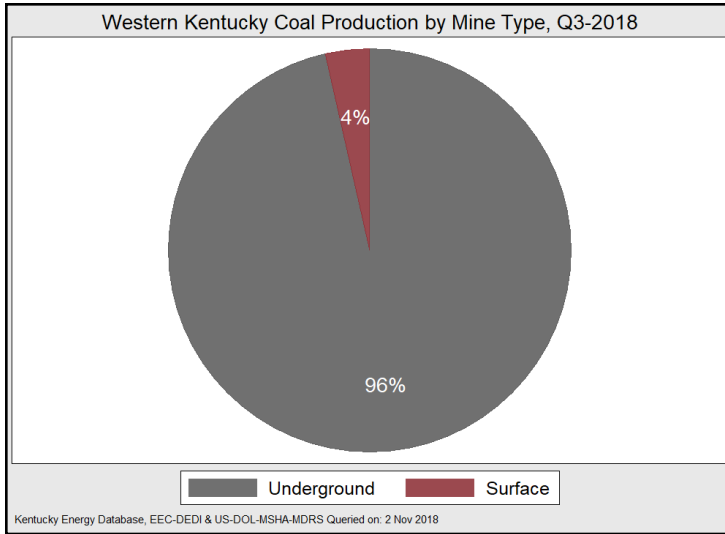


Quarterly surface production decreased by 6 percent from the second quarter of 2018 and decreased by 0.4 percent from the previous year. Surface mines produced just over 2 million tons.

Preliminary data indicate that Pike County remained the top coal producing county in eastern Kentucky during the second quarter of 2018 by mining just under 1 million tons, a 12.3 percent decrease from the previous year and 4.7 percent decrease from the previous quarter. Perry County produced 40,000 tons less than Pike County to rank second in coal production in eastern Kentucky. Harlan remained in third in production with just under 833,000 tons.

Western Kentucky Coal Production

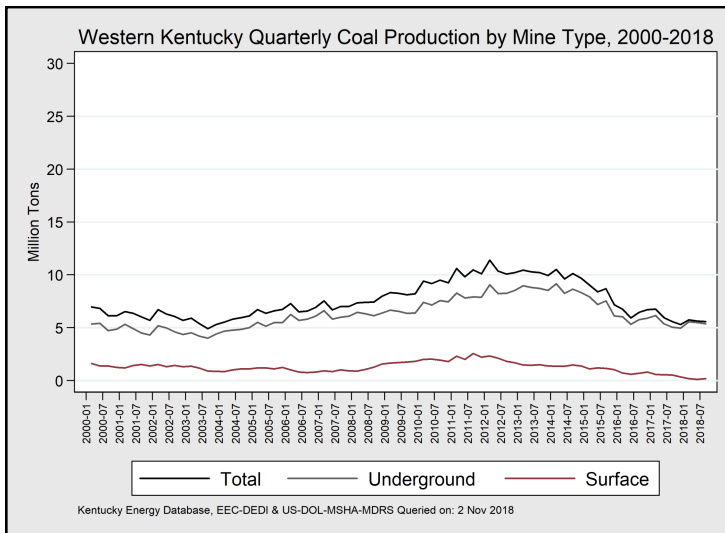
July to September 2018



Mine Type	Q3 Tonnage	YOY Change	Quarter Change
Total	5,579,392	-0.1%	-0.8%
Underground	5,381,852	+6.7%	-2.0%
Surface	197,540	-63.4%	+50.9%

County	Q3 Tonnage	YOY Change	Quarter Change
Union	2,435,669	+9.3%	+7.0%
Hopkins	806,917	-3.3%	-10.8%
Ohio	668,410	-36.5%	-4.4%
Muhlenberg	661,093	+13.4%	-11.7%
Webster	631,356	+12.8%	+5.8%
McLean	293,279	-1.0%	-14.1%
Daviess	82,668	+184.0%	+52.2%

Coal production in western Kentucky underground mines increased by 6.7 percent from the third quarter of 2017.



The photo above features equipment and a miner at River View Coal Mine in Union County. Photo taken by Aaron Camenisch for the Energy and Environment Cabinet in 2010.

Western Kentucky coal production decreased by 0.1 percent from the third quarter of 2017, to just under 5.6 million tons. Underground production increased by 6.7 percent from the third quarter of 2017, while surface mining operations showed a decrease of 63.4 percent to just under 200,000 tons.

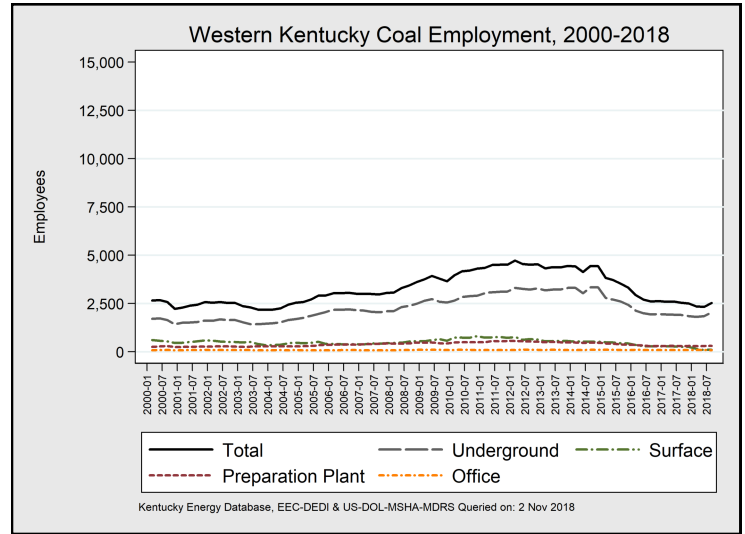
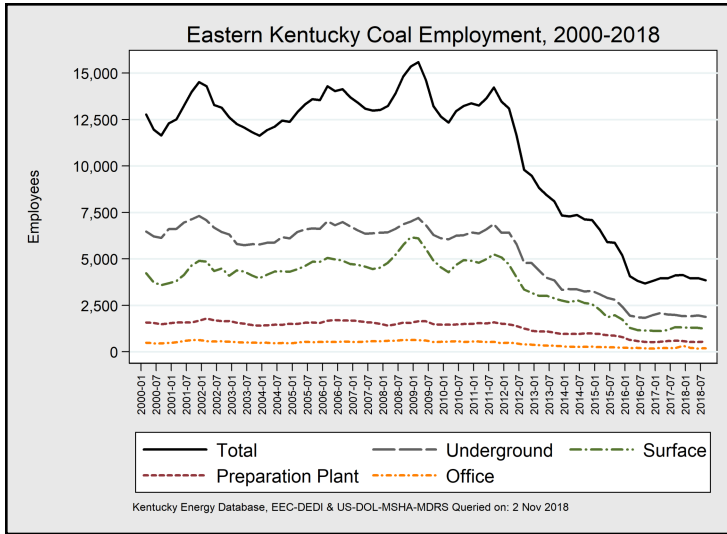
Daviess County experienced the largest year over year production increase at 184 percent. Muhlenberg County had the largest quarterly increase at 13.4 percent.

Union County mined 2.4 million tons of coal during the third quarter of 2018, an 9.3 percent increase from the previous year.

All other counties in western Kentucky except Hopkins County, Ohio County and McLean County experienced increases in production since the third quarter of 2017.

Kentucky Coal Mine Employment

July to September 2018



East KY	Q3	YOY Change	Quarter Change
Total	3,851	-265 -6.4%	-110 -2.8%
Pike	945	-80 -7.8%	+23 +2.5%
Harlan	771	-93 -10.8%	-175 -18.5%
Perry	679	-12 -1.7%	-21 -3.0%
Leslie	304	+106 +53.5%	-16 -5.0%
Bell	288	-88 -23.4%	+41 +16.6%
Floyd	242	+6 +2.5%	+11 +4.8%
Whitley	130	-13 -9.15%	+6 +4.8%
Knott	98	+26 +36.1%	+11 +12.6%
Letcher	98	+50 +104.2%	+4 +4.3%
Martin	61	-138 -69.4%	+13 +27.1%
Knox	58	-10 -14.7%	+1 +1.8%
Magoffin	42	31 +281.8%	-3 -6.7%
Johnson	39	-47 -54.7%	-13 -25.0%
Lawrence	32	+8 +33.3%	+3 +10.3%
Boyd	23	-4 -14.8%	+7 +43.8%
Clay	15	+1 +7.1%	-1 -6.3%
Breathitt	13	+1 +8.3%	+2 +18.2%
Morgan	7	-1 -12.5%	+0 +0.0%
McCreary	4	+0 +0.0%	+0 +0.0%
Laurel	2	-2 -50.0%	-3 -60.0%

West KY	Q3	YOY Change	Quarter Change
Total	2,530	-12 -0.5%	+199 +8.5%
Union	732	+73 +11.1%	+45 +6.6%
Hopkins	468	+10 +2.2%	+19 +4.2%
Muhlenberg	395	+11 +2.9%	+21 +5.6%
Ohio	369	-121 -24.7%	+83 +29.0%
Webster	300	-8 -2.6%	+9 +3.1%
McLean	183	+26 +16.6%	+19 +11.6%
Marshall	44	-2 -4.4%	+0 +0.0%
Daviess	25	+3 +13.6%	+1 +4.2%
Livingston	14	+1 +7.7%	+2 +16.7%

Description	Q3	YOY Change	Quarter Change
KY Total	6,381	-277 -4.2%	+89 +1.4%
Underground	3,911	+16 -0.4%	+97 +2.5%
Surface	1,335	-246 -15.6%	-57 -4.1%
Preparation Plant	861	-32 -3.6%	+36 +4.4%
Office	274	-15 -5.2%	+13 +5.0%

Eastern Kentucky coal mines decreased employment by 265 jobs or 6.4 percent on a year over year basis. Western Kentucky decreased employment by 12 jobs or 0.5 percent on a year over year basis. Western Kentucky did, however, increase employment by 199 jobs or 8.5 percent compared to the previous quarter.

During the third quarter of 2018, Kentucky coal mines increased total employment by 89 jobs, a 1.4 percent increase from the second quarter of 2018. On a year over year basis, Kentucky coal mines decreased total employment by 4.2 percent or 277 jobs.

energy.ky.gov/Pages/CoalFacts.aspx

Date		Kentucky Total				Eastern Kentucky				Western Kentucky			
		Average		Tons of Coal		Average		Tons of Coal		Average		Tons of Coal	
		Employment		Produced		Employment		Produced		Employment		Produced	
		Annual	Quarter	Annual	Quarter	Annual	Quarter	Annual	Quarter	Annual	Quarter	Annual	Quarter
2009	Q4		16,380		24,127,190		12,729		15,902,420		3,651		8,224,772
2010	Q1	17,115	16,378	105,554,104	26,304,890	13,020	12,404	68,222,672	16,883,820	4,095	3,974	37,331,432	9,421,068
	Q2		17,217		26,510,520		13,051		17,339,430		4,166		9,171,091
	Q3		17,517		26,682,350		13,308		17,187,870		4,209		9,494,482
	Q4		17,796		25,972,700		13,484		16,727,910		4,312		9,244,791
2011	Q1	18,069	17,684	109,018,240	27,889,220	13,679	13,331	68,007,480	17,282,860	4,390	4,353	41,010,760	10,606,360
	Q2		18,191		27,222,030		13,695		17,385,220		4,496		9,836,813
	Q3		18,810		27,804,080		14,301		17,340,210		4,509		10,463,880
	Q4		18,087		26,047,990		13,581		15,944,280		4,506		10,103,710
2012	Q1	15,622	17,932	91,358,160	26,571,280	11,117	13,203	49,311,848	15,171,750	4,505	4,729	42,046,316	11,399,530
	Q2		16,278		22,924,670		11,731		12,568,670		4,547		10,356,000
	Q3		14,406		21,173,110		9,892		11,094,450		4,514		10,078,670
	Q4		14,107		20,555,240		9,564		10,343,130		4,543		10,212,120
2013	Q1	12,550	13,223	80,359,000	20,590,860	8,239	8,897	39,480,036	10,144,620	4,310	4,326	40,878,964	10,446,240
	Q2		12,882		20,752,660		8,490		10,464,560		4,392		10,288,110
	Q3		12,548		19,876,820		8,180		9,667,612		4,368		10,209,210
	Q4		11,892		19,081,980		7,443		9,146,575		4,449		9,935,408
2014	Q1	11,508	11,790	77,468,336	19,494,440	7,242	7,366	37,499,304	8,969,519	4,267	4,424	39,969,028	10,524,930
	Q2		11,574		19,864,630		7,447		10,240,600		4,127		9,624,035
	Q3		11,681		19,866,500		7,239		9,742,734		4,442		10,123,770
	Q4		11,619		18,204,500		7,186		8,508,199		4,433		9,696,298
2015	Q1	9,493	10,465	61,424,920	16,938,520	5,897	6,639	28,000,918	7,788,933	3,597	3,826	33,424,002	9,149,591
	Q2		9,674		15,817,610		5,958		7,421,363		3,716		8,396,251
	Q3		9,094		15,574,200		5,579		6,867,600		3,515		8,706,595
	Q4		8,401		12,884,260		5,077		5,712,695		3,324		7,171,565
2016	Q1	6,580	7,022	42,773,250	11,407,838	3,860	4,087	16,889,605	4,643,300	2,720	2,935	25,883,645	6,764,538
	Q2		6,539		9,928,305		3,835		3,989,977		2,704		5,938,328
	Q3		6,302		10,276,810		3,692		3,812,385		2,610		6,464,425
	Q4		6,456		11,160,297		3,824		4,443,943		2,632		6,716,354
2017	Q1	6,601	6,550	41,717,313	11,438,661	4,042	3,956	18,111,755	4,678,957	2,560	2,594	23,605,558	6,759,704
	Q2		6,558		10,535,083		3,954		4,586,160		2,604		5,948,923
	Q3		6,658		9,792,948		4,116		4,209,624		2,542		5,583,324
	Q4		6,639		9,950,621		4,140		4,637,014		2,499		5,313,607
2018	Q1		6,300		10,228,595		3,954		4,470,842		2,346		5,757,753
	Q2		6,292		9,989,109		3,961		4,367,755		2,331		5,621,354
	Q3		6,381		9,740,970		3,851		4,161,578		2,530		5,579,392

In order to provide the public with timely access to these data, this report uses the best-available estimate for each factor at the time of publication. Data for Q3-2018 are preliminary and subject to revision. Data for previous dates have been revised.

This report is produced by the Kentucky Energy and Environment Cabinet using data from numerous sources including the U.S. Department of Labor's Mine Safety Health Administration, the Kentucky Department of Revenue, and the Kentucky Division of Mine Safety.

To check for an updated version of this report or for more detailed information on coal production in Kentucky, please visit us online at: energy.ky.gov/Pages/CoalFacts.aspx